

# Iwade Village News

June 2007

## Vandalism in Iwade

Now that we have a nice village setting, the Parish Councillors would have hoped that residents would like to keep it to the high standard that is currently being set.

However, there are still a few of us who seem to enjoy destroying what facilities we have around us. The children's play area in Woodpecker Drive has been targeted with graffiti on the

seats and play equipment, along with local youths standing on the children's play equipment and wrapping the swings around so non of the little children can play on the swings.

The Medical Centre has also been under attack, with graffiti. Iwade Parish Council wish to inform all concerned that Iwade has a zero tolerance on this type of behaviour and action will be taken.

Also there are still residents who allow their dogs to foul on the

pavements and in the parklands where children play. Pick it up and take it home. This is a warning as action will soon take place to catch these people by Swale Borough Council dog warden team, and let's hope it is not you!!! You may not see them but they are watching and recording.

It has taken Iwade many years to get this type of facilities/equipment, and the Parish Council will not sit around and let a few individuals ruin it for the rest.

## Recycling and Refuse Collection

Our new recycling and Refuse Collection Service from summer 2007

Here is a bit of background on the new scheme. As you may

already know every household in the borough will receive a second blue wheelie bin for recyclables. The bin will also include an insert box where you can put glass bottles and jars. The bins will be collected on alternate weeks and Swale Borough Council are also promoting composting and a cloth nappy campaign in conjunction with Kent County Council who are providing financial incentives for the public to take up these activities.

The aim is to help us to recycle more so on blue -bin day you can put as much paper, card, tins and cans, glass jars and bottles and plastic bottles out for collection as you want. BUT on green bin day all rubbish must be in the bin with the lid shut to keep bugs and smells in

They are moving closer to implementing the scheme and are currently finalising the roll out order and start dates for each area in the Borough. In the next issue of Iwade Village News we hope to provide you with the detailed itinerary of rollout dates.



### Popular Annual Summer CONCERT

IN THE GROUNDS OF ALL SAINTS CHURCH, IWADE

Saturday 7<sup>th</sup> July — 7.00 pm

By the  
**UK PAPER CONCERT BAND**

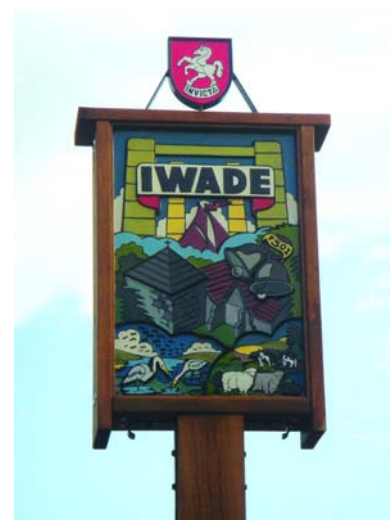
PLAYING A WIDE SELECTION OF MUSIC

*Please bring your own seating / rug  
(will be in church if weather unkind)*

Admission £3.00 Concessions £2.50

Children (under 7) Free  
(includes light refreshments)

Details / Reservations: 01795 478103  
( tickets available on the night)





## Chetney Marsh under attack

A BIG PROBLEM is accruing at Chetney Marsh which is killing the wildlife and fish. Due to the hot summer of last year, and global warming blue-green algae is appearing around the Chetney Marsh causing an unsightly appearance with a pungent smell. Not only does this effected water look unappealing for recreational activities, such as swimming, boating or fishing, it is making the area unsuitable for agricultural use.

Despite their name, blue green algae are not algae at all. They

are a type of photosynthetic bacteria called 'cyanobacteria' that rely on sunlight for energy.

Blue green algae are present in almost all aquatic ecosystems, including creeks, rivers, lakes and small wetlands. Individual cells are quite small, so blue green algae can be present in the water body without being visible.

However, as environmental conditions become just right, algae numbers can start to increase rapidly and scum becomes easily visible across the water surface. The algae range in colour from dark green to yellowish brown and develop paint like consistency as they dry out around the waters edge. A blue pigment can also be seen as they dry.

This blue-green algae produces

chemicals that cause musty or earthy states and odours in drinking water and makes the water undrinkable. This can place significant strain on the water supply system.

More significantly, this algae produces toxins that can be dangerous to animals and people if they are consumed, inhaled or possibly even touch the skin.

This blue green algae is highly toxic and produces three main types of toxin:

Endotoxins are thought to produce allergic reactions, skin rashes, irritation of the eyes and gastroenteritis.

Neurotoxins damage nerves and can cause muscle tremors, especially in the muscles that animals and people need to breath.

Hepatotoxins damage the liver. They may also increase the risk of certain types of cancer.

Blue green algal toxins are colourless, odourless, and can remain present in the water



weeks after the blue green algae have disappeared. They are not destroyed by boiling effected water.

Swale Borough Council, Kent County Council, English Nature and Lower Medway Drainage Board are all aware of this situation, and at present are passing the buck. Chetney Marsh has 145 species of bird that visits the Marsh in any one year and currently has 67 nesting species of bird.

If you are walking or taking the dog around this area, please make sure that you keep them on a lead or under control. If you or your dog enter the water, serious complications may

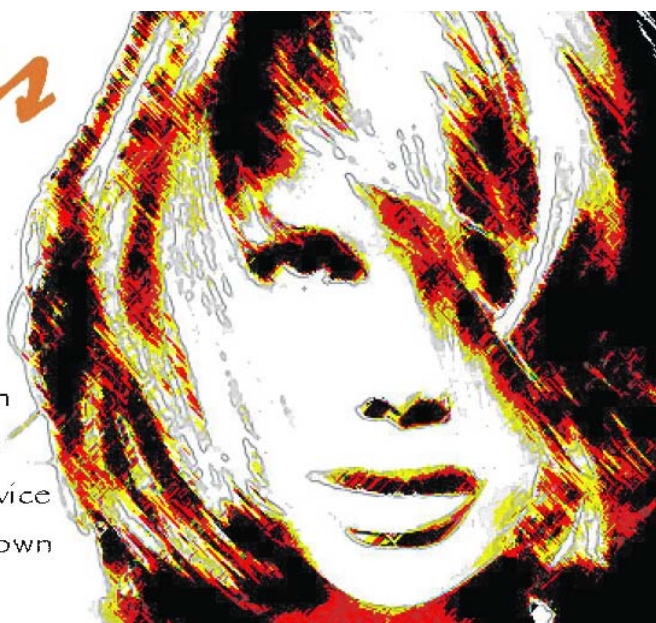


occur and either go straight to the doctors or vet and seek medical advice.

Peter, the Chetney Marsh warden advised me that this algae is complicated to control by the fact that as it dies and the cells begin to break down, the toxins are released in the water. Cells may also release toxins as they grow. The Blue green algal blooms are natural part of aquatic environment.

*Kates  
Kuts*

Former Salon owner with over 15 years experience offering you a mobile service at modest prices in your own home



**Ladies**

Cut & Blow dry from £12.50  
Wash & Blow dry from £7.00  
Foil Hi-Lites from £30.00  
Colours from £30.00

**Children**

Cuts from £4.00

"Has lots of patience with children"

**Phone Kate**

07796654984

# Happy Days



during the last month, celebrating the birth of Ryan Michael, a baby boy for Sarah Shepherd and her husband Andy.

We are also looking forward to the wedding of Karen and Mark as we recover from the long awaited wedding of Sue and Sean. Congratulations to both couples.

Happy Day is also looking for a new cook, if you think you could provide home made meals from fresh ingredients to feed 60 children, have a passion for cooking and children and want to work as part of a team, please contact Sue or Collette on 01795 424348/439240.

Although we are currently full we have limited places for children from 6 weeks - 3 years from September. Our pre-school is already fully booked.

As our pre-school children prepare to go to school we welcome the visits from the reception teachers to meet their new pupils. We are very touched and proud to hear the feed back from the teachers and have every confidence the children leaving Happy Days, leave well prepared and happy, as they start their new journey.

At the other end of the nursery the babies are taking full advantage of their own area in the garden, specially deigned to cater for the little ones in the nursery. Our spacious garden is enjoyed by all with much of the regular activities being enjoyed out of doors in this lovely weather.

The parents all welcomed the cake sale for missing Madeline McCann, and we raised £250 which we have sent to the fund.

Our staff has also been very busy



## Community Warden Update

Now that the warmer weather is here! please remember to close all windows when not in unoccupied rooms, particularly ground floor ones. Also make sure if you are in the rear garden and the front door bell rings. Shut and lock the rear house door, as it has been known that whilst being distracted at the front door, offenders have entered by the back door.

Don't let the distraction

burglars spoil your holiday

Between 31st May and the 6th June there have been twelve reported incidents of interfering, or stealing from vehicles in the Area.

Please where possible garage your vehicle overnight or if left on the road, make sure it is in a well lighted area and of course make sure it is locked and where fitted, the alarm set.

If you see anyone acting suspiciously around vehicles, don't attempt to challenge them but phone the police.

Or if you have any information that can assist with any of the above incidents please, contact your local police station, Telephone number 01795 477055 or the Neighbourhood Watch Support Office on freephone. 0800 100 3308. and that you are a member of Neighbourhood Watch.

## Iwade School goes to the Wild West

The Wild Wild West will be hitting Iwade in a big way. Iwade Community School are holding their Summer Fete on Sunday 1st July from 12am to 3pm. Everyone must get behind the school and make this the great success it deserves.



The Organisers are hoping that everyone will turn up dressed up in their favourite Wild Wild West Outfits. There will be Face painting, Splat the Rat, Coconut Shy, Beat the goalie, Tombola, Raffle, the ever popular BBQ,

Hook the Duck just to name a few.

If you want to hire a table please contact the school and the cost will be £10 and as ever, they are desperate for more volunteers. So if you can spare one or two hours to set up or man a stall please again let the school know.



## July special offer

*From your local*

*consultant*

*Gail Hayes*

*For a free catalogue and samples please*

*phone me on 01795 473803*

*(Free delivery to all customers in Iwade)*



speakers talking about their travels but it was all the more interesting to hear about it from Sarah, someone we all know.

Our annual outing is on Wednesday evening 20 June. Sarah has come up trumps again, having organised us a trip to Beech Court Gardens, Challock. Let's all hope the weather is kind to us as otherwise we will all be holed up in the tea room! Whatever the weather, we always have a good time when we get out together.

We had a great meeting in May when, having voted for the resolution against the closure of cottage hospitals, member Sarah Sherry gave us a presentation about her recent cruise. We all thoroughly enjoyed her talk. We have often entertained

Wednesday July 11 is an extra

meeting for us, the Annual Garden Safari. Iwade has grown since we started this event. There are so many gardens to get round before it gets dark in time for the strawberries and cream at the last house that it's become something of a challenge. The committee may need to consider an abbreviated route this year.

Our monthly meeting in on Wednesday 18 July. This is to be a Drawing for the Terrified type of meeting, with our speaker giving us an introduction to drawing. Nobody can say we don't have a varied programme of events at Iwade WI.

This is a good opportunity to announce that Iwade WI has been lucky enough to be awarded a grant from the

Lottery Awards for All Fund so we can all spend a weekend at Denman College, the WI's college near Abingdon in Oxfordshire. We applied for this grant some time ago to enable us all to take advantage of this facility, which otherwise we may not all have been able to afford. It will be a great team building opportunity for us, benefitting everyone regardless of their age, income or ability. Unfortunately we have a while to wait, until April next year. A number of WI's have been successful in their bids to the lottery fund and, as a result, many of the Denman courses are already booked up. We are really looking forward to this. Denman College is a beautiful building and we will have such a good time.

**Heaven**  
**Hair**  
**&**  
**Beauty**  
**Unisex Hair**  
**Salon**

**Where quality and service still count**

A modern friendly salon with experienced and Fully Qualified Hair and Beauty Therapists and Nail Technician offering a full range of beauty and wellness treatments.

Now able to offer Power Tower Tanning Booth for the Sun tan all year round

Open Monday to Saturday 9am to 6pm with late nights Thursdays and Friday until 9pm.

**01795 435958**



**SITTINGBOURNE & MILTON REGIS GOLF CLUB**

Wormdale, Newington, Sittingbourne, Kent, ME9 7PX  
Tel. 01795 842261 email. [sittingbournegc@btconnect.com](mailto:sittingbournegc@btconnect.com)



**Midweek memberships available**

Visitors welcome - Monday to Friday

Full-time teaching Professional

Extensive practice facilities

Special Society packages

**[www.sittingbournegolfclub.com](http://www.sittingbournegolfclub.com)**

# Parent and Toddler

The parents and toddlers have been busy spring cleaning their wardrobes. We are collecting old clothes, toys, shoes, bedding and exchanging them with money, so we can have funds to go on the end of term summer trip to Godstone Park on 31st July.

Do come along to the Church and see our fantastic display of Baa Baa Black Sheep. You will be able to see how hard the toddlers have been working to make this display and we are all very proud of them.

The DVD tapes were a great success and many dads on Fathers Day received their special presents from their children to watch over and over again. It will not be long before some of our toddlers will be receiving Golden Globes or BAFTAS.

It has been wonderful to see so many new faces and a big welcome to you all. Remember we meet every Tuesday morning from 9am to 11am. Tea, Coffee and cold drinks are available free of charge and it only costs £1.50 for your first child and then an extra 50p per sibling their after.

# Beavers and Cubs

Last term was crammed with lots of activities as we are currently following the 100 years of scouting programme. We designed and made our very own shields and went on a quest to find treasure entering the river of no return and passing through the temple of certain doom. Hug a tree night was entertaining and good fun. Our trip to Howlets Wild Animal Park was very interesting with the Elephants giving us a lesson in nature. The Tigers were seen to be having a midday snack of mice and the Monkeys/Gorillas tucked into allsorts of culinary delights, whilst entertaining us on the slide and climbing frame. It was lovely to be able to amble round at our own pace and see so much. Thank you to those Beavers/Cubs that came to the St Georges day parade it was a scorcher with

the tarmac literally melting beneath our hot bottoms. We were very proud to watch them marching behind our colours held by James and Georgia.

A big thank you to all the Beavers and Cubs that helped with the village clean up. You did us proud and didn't the Village look immaculate after everyone had finished.

Can it really be the final term now before the summer holidays? What a fun packed time it promises to be. We are holding our Agm on Monday 18th June where we will have a Beavers/Cubs versus Parents evening jam packed with an obstacle course, games, a quiz and raffle so come on Beavers/Cubs lets show those

parents what you're made of. We will also be fitting in a trip crabbing locally (I'm told catching crabs is fun!) We have made recycled robots (see photo), in which we will collect newspapers, and we are making up our own game using plastic bottles. We are going to make our own puppets and tell a story. We also pledge to make sure that the Orchard and play park remains clean by checking it once a month.

We are currently full however we have a waiting list so please feel free to put your child's name down Beavers have to be 6 and Cubs 8, subscription is only £1.50 per week. We look forward to seeing you.



**Arty Fencing & Garden Maintenance Limited**

**01795 478877  
07738 678567**

**7 Wigeon Road,  
Iwade,  
Sittingbourne,  
Kent,  
ME9 8WQ**

We are an Iwade based company specialising in: Fencing, Decking, Sheds and Garden structures, Patios and Paths, Lawn mowing and General Garden Maintenance and Clearing.

We also offer an external maintenance service including guttering repairs and renewals. We source our materials locally and rely on building a local reputation for quality workmanship.

All work is guaranteed and we will take away the remains of your old fence, garden structure or shed. We also follow up our work with a courtesy phone call one month after completion

## Callum James Bathrooms

*Design & Installation or Supply only Bespoke service to suit all*

- Bathroom Suites
- Showers & Enclosures
- Bathroom Furniture & Accessories
- Tiling
- Complete Service
- All work Guaranteed

**Free Advice & Survey**

**01795  
424 339**

2 Elm Tree Avenue | Iwade | Sittingbourne | Kent | ME9 8UD



# Messages from...

## Iwade Parish Council

Minutes of the Annual Parish Meeting held on Tuesday 8th May 2007. The following items were raised and discussed:

Election of Officers and Declaration of Acceptance (Chairman, Vice Chairman and Responsible Financial Officer

Cllr Peter Wilks was elected for another term as Chairman of the Parish Council. This was proposed by Cllr Phill Fearn and Seconded by Cllr Malcolm Hutchings

Cllr Philip Fearn was elected Vice Chairman of the Iwade Parish Council. This was proposed by Chairman Peter Wilks and Seconded by Cllr Derek White

Mrs Sarah George, Clerk to Iwade Parish Council was appointed as the Responsible

Financial Officer.

Election of Representatives

Village Hall

Cllr Lisa Older offered to stand as representative for the Village Hall Committee

Kent Association of Parish Councils

It was agreed that Vice Chairman Phil Fearn and Cllr Brian Groves would act as representatives

Planning Committee

It was agreed that Vice Chairman Phil Fearn, Cllr Brian Groves, Cllr Malcolm Hutchings, Cllr Peter Wilks and Cllr Derek White would act on the Parish Councils behalf regarding planning applications.

Parkland

It was agreed that Cllr Phil Hyde and the Parish Clerk will deal with issues regarding any green areas and parkland within the

village.

Minutes of Annual Parish Council Meeting 2004

Minutes of Meeting held on 9th May 2006 were re-circulated as a reminder and it was agreed by all present as correct and that there were no matters still outstanding arising from that meeting.

Matters Arising

None

Adoption of Accounts for Year Ending 31st March 2007

Accounts for the above year, were still with the Internal Auditor, once received will be signed by the Chairman and Responsible Financial Officer as a true record of the accounts relating to the above year. Once the Internal Audit had been completed and a written statement had been received, Clerk to send the paperwork to the External Auditor (Audit Commission) to close accounts..

Dates of Meetings 2007/08

The Iwade Parish Council agreed to meet in the Iwade Village Hall at 7.30pm on the second Tuesday of every month.

Matters arising from the minutes of the Monthly Parish Council held on Tuesday 8th May 2007.

Land North of the Church

Papers are still with Swale Borough Council,

Village Park 106 Agreements dated January 2001 and February 2005

Swale Borough Council now has their enforcement team looking into why this land has not been conveyed to Swale Borough Council. Swale Borough Council contact is Christian Seawood. After a general discussion it was raised that if the Parish Council did not have a satisfactory progress regarding this item then legal advice should be sort. Chairman Peter Wilks to continue chasing.

## All Saints Church

Leading school assemblies, we are usually asked to follow the current theme, which in the case of Iwade School for this term is 'Changes,' which provokes some deep thinking.

Many of us are often not too comfortable with changes, even if it is something we have been looking forward to for a long time. House moving, weddings, new schools or jobs - all these need times of adjustment, a time of saying goodbye to what has passed and a positive looking forward to what is ahead.

Uncertainty, vague unease and loneliness can become real fears or .....they can be pushed away in the knowledge that there is One who never leaves our side in good times or bad. Jesus has done everything possible to show us just how much He cares for us - forget the childhood

understanding of 'little Jesus, meek and mild!' He is the all powerful, all knowing God who stopped at nothing to halt the advance of evil in the world, even giving up His life to show that not even death can hold Him.

He waits patiently for us to not just acknowledge Him but to trust Him and give Him all the things that trouble us. All powerful He may be but He also has a Father's heart for us all and a love that is totally unconditional, He also loves us too much to leave us as we are, He only wants the absolute best for us.

If you are interested in knowing more, think about joining the Alpha course that we hope to start in September. No pressure, come to the free supper and then decide if you want to continue. (Approx 12 weekly meetings of supper, D.V.D. and talk. Challenge of ideas welcome, watch this space! Have a good summer.

Revd. Jacky Davis.



**NMC**  
**THE OLD PETROL STATION,**  
**36 FERRY ROAD, IWADE**

**"SETTING THE STANDARD"**  
Serving, MOT and Valets

Key Drop off facility, Petrol & Diesel Cars and Vans. All work guarantee. Fully Insured

Serving and repairs to all leading makes of car

Quality work at very competitive rates  
Experienced Staff and Fitters  
LET US CARE FOR YOUR CAR.....

**RING TODAY ON**  
**01795 438988**  
**WWW.NMCMOTORS.CO.UK**

# The Churchwardens

As I sit typing this (1st week in June) the exhibitors for the Flower Festival in All Saints Church, are still busy finalizing plans and putting early touches to their exhibits. BUT, by the time you read this (end of June) it will all be just a memory. A happy one I hope.

Did you come along to share in the beauty of the varied creations? Hope you found a few moments to savour the peace and beauty of your village church.

The next BIG EVENT is the Band Concert to be held in the grounds of the church on Saturday July 7th at 7pm. This popular concert by the U.K. Paper Concert Band is an annual event and part of the Swale Festival. Come and join us for the evening - simply bring a seat (or rug) to sit on. Cost is just £3 (or £2.50

for over 60's or under 16's.) Under 7's are completely free. Tickets on gate on the night or from Sylvia telephone number 478103.

On September 2nd there is to be a repeat of the Walk & B.B.Q. that was held last September. Walk starts from Church gates at 2pm with B.B.Q. on return at 4pm. If you have a well behaved dog do let them enjoy the walk too - ON A LEAD please.

Following Saturday is the annual Sponsored Bike/Walk day. This event is run by Friends of Kent Churches - a charitable group who fund a lot of major repairs to these ancient buildings. They have been generous to Iwade in recent years. Idea is to visit as many churches as you are able - either on cycle or on foot. No traveling in cars permitted. In return you are encouraged to seek sponsors for each church you visit, with one church (usually your home one) being the named church. This



## REGISTERED CHILDMINDER

### IWADE

Tel: Claire 428478

\* VACANCIES AVAILABLE - FROM BIRTH +

- \* Mum of 2
- \* Play room
- \* Transport
- \* Iwade school run

\* Also available to pick up from clubs /nursery/playgroups etc. . .

\* Fully registered, police checked, insured, first-aider and ofsted inspected!



church then receives half your sponsorship with The Friends retaining the other half toward funding grants. Are you able to ride or walk for All Saints In recent years, being unable to ride or walk far, Sylvia has sat in Iwade Church all day to welcome visitors and been sponsored for her efforts - raising around £100 each year. Perhaps you feel able to help this way (less strenuous for you).

We are still collecting any odd pennies you may have

toward the 'Comfort' Fund. Also Sylvia will be delighted to take any used postage stamps you do not save for charity. She collects for the Kent Air Ambulance Trust and Demelza House. Can you save a few? Just give her a call on 478103 and collection can be arranged. Alternatively drop them into church when passing. It is open to have a look around on 2nd Saturday of every month 10am - 2pm. free cup of tea/coffee offered too. See you there sometime.

## Services and Events

|            |   |               |
|------------|---|---------------|
| June 24th  | Family Service  | 10.30am       |
| June 25th  | visit by Age Concern with Pupils from Iwade School - do come and support them | 2pm           |
| June 27th  | Coffee morning with Good News Van   | 10.30 to Noon |
| July 1st   | Communion   | 11.00am       |
| July 7th   | Band concert in church ground   | 7.00pm        |
|            | Tickets available on night or call Sylvia on 478103 To reserve yours.         |               |
|            | BRING OWN SEATS. In Church if weather unkind                                  |               |
| July 8th   | Morning Prayer  | 11.00am       |
| July 15th  | Communion Service   | 11.00am       |
| July 22nd  | Family Service  | 10.30am       |
| July 29th  | NO SERVICE AT IWADE Combined Service for Benefice at Upchurch                 |               |
| August 5th | Communion Service   | 11.00am       |

# Useful Contact/ Telephone Numbers

## Parish Council Contact

Clerk to Iwade Parish Council (Mrs Sarah George) 01795 437053  
Chairman of Iwade Parish Council (Mr Peter Wilks) 01795 472452

## Village Hall

Village Hall Caretaker 01795 475967  
Maidstone Area Mobile Library (Van 4) 07740 183758  
Swale Housing Association - Area Office 01795 434343  
Swale Lighting Street Lighting Faults 01795 417468  
Community Police Officer (Cliff Holroyd) 01795 417197  
Iwade Community Warden (Gerry Cox) 07872378220

## Swale Borough Council Reporting Line:

Bins, dog bins and rubbish (David Hill) 01795 417850  
Highways, Road Calming, 01795 424341  
Flood Risk number 0800 80 70 60  
Swale Police 01795 477055  
Neighbourhood Watch Hotline 0808 1003308  
Anti Social Behaviour 01795 417575  
Abandoned Vehicles 01795 417850  
Noise Nuisance 01795 417850  
Noise Nuisance (Out of Hours) 07881 817601  
Street lighting faults for (Sheerstone, Springvale, Evergreen Close, Linkway, Meadow Rise, Meadow Close) 01795 437053

## Developers

Wards Homes 01634 855111  
Hillreed Homes 01622 691561  
Matthews Homes 01707 655550  
Constantine Projects Ltd 01634 296886  
Kent Highway Services 08458 247 800

## Iwade Village News

Editor, News Coordinator (Mrs Sarah George) 01795 437053  
News Distributor (Mrs Sylvia O'Shea) 01795 478103  
Atlantic Print Limited - Printer 01795 420628

## Iwade Village Clubs

Iwade Herons Football Club (Adam Elliott) 01795 439711  
Lamplighters (Wynn Webb) 01795 424502  
Ballet (Every Monday from 2.30pm in Newington Village hall) 01795 870545

## Clubs below are held in IwadeVillage Hall

Iwade Women's Institute (3rd Wednesday of every month) 01795 474686  
Beavers/ Cubs (Monday evenings from 6pm) 01795 599225  
Iwade Youth Club (Every Tuesday Evening from 7pm) 01795 555164  
Parent and Toddler (Every Tuesday morning from 9pm to 11pm)  
Karate (Every Thursday evening from 5pm ) 07092 118045  
Socatots (Every Wednesday afternoon from 1pm) 01795 471412

## Local Village Nursery's/ School

Tinkerbells (based in the Iwade Village Hall) 01795 428061  
Happy Days Children's Nursery (Crosswinds, Grovehurst Rd) 01795 424348  
Iwade Community Primary School 01795 472578  
Ickle Pickles Day Nursery (at the village centre) 01795 474551

## Doctors

Iwade Medical Centre (1 Monins Road, Iwade) 01795 413100

## Village Amenities

Woolpack Pub The Street, Iwade 01795 472656  
Body Care, Hair and Beauty 01795 474555  
Heaven Hair & Beauty 01795 435958

## All Saints Church Contacts

Curate (Rev Ron Partridge) 01795 842007  
Honorary Asst Priest (Rev David Webb) 01795 424502  
Churchwardens: (Sylvia O'Shea) 01795 478103  
(Maria Wilkinson) 01795 477133